

SESSION 1:
FINANCIAL PERFORMANCE & PEOPLE

Chris & Alana Brander (host farm) presenting



Facilitated by

Veronica Oostveen
Senior Area Manager
Central Southland, DairyNZ

(People Section)



Ron Pellow
Senior Farm Systems Specialist
DairyNZ

(Financials Section)



NOTES

Driffield Farming Ltd Physical Overview	2025/26 Driffield Forecast	2024/25	2024/25 DairyBase Southland Average (90 farms)	2023/24	2022/23
Effective area (ha)	720	720	242	720	720
Crop Area - turnips	60	60		40	40
Peak cows milked	2,100	2,100	679	2,100	2,100
Stocking rate (cows/ha)	2.9	2.9	2.8	2.9	2.9
Total kg MS	1,130,000	1,111,777	307,580	1,102,379	1,038,695
kg MS/ha	1,569	1,544	1,271	1,531	1,442
kg MS/cow	538	529	454	524	494
Kg/MS % LWT	108%	106%	93%	105%	99%
Cow Liveweight (estimate)	500	500	490	500	500
BW	238	222	-	219	158
Fertiliser: Total N applied (kgN/ha)	190	190	150	190	190
Full Time FTE	13.5	13.5	3.7	13.5	13.5
Cows/FTE	155	155	184	155	155
kgMS/FTE	83,703	82,353	83,274	81,657	76,940
Imported Supplements (tDM/ha)	2.7	2.4	2.7	1.9	1.6
Imported Supplements (tDM/cow)	0.95	0.8	0.96	0.6	0.5
Off farm grazing MAC (tDM/ha)	2.1	2.4	1.6	2.4	2.4
Off farm grazing Youngstock (tDM/ha)	2.1	2.1	2.0	2.1	2.1
Pasture and Crop Harvested (t DM/ha)	13	13.3	11.2	13.7	13.4

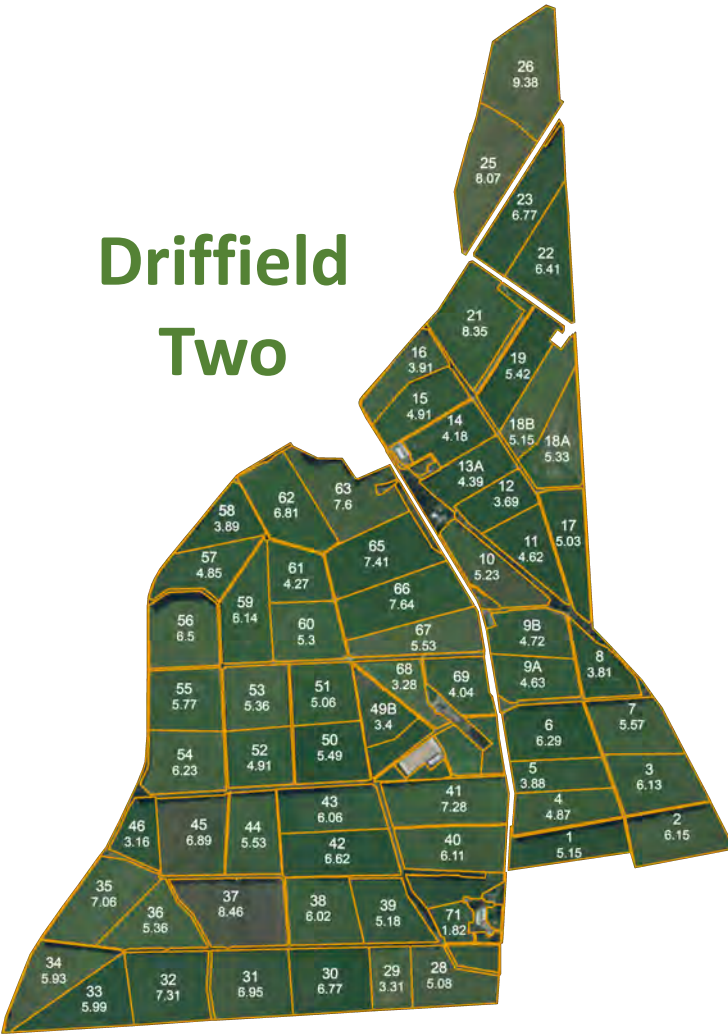
Driffield Farm Maps



Driffield One



Driffield Two

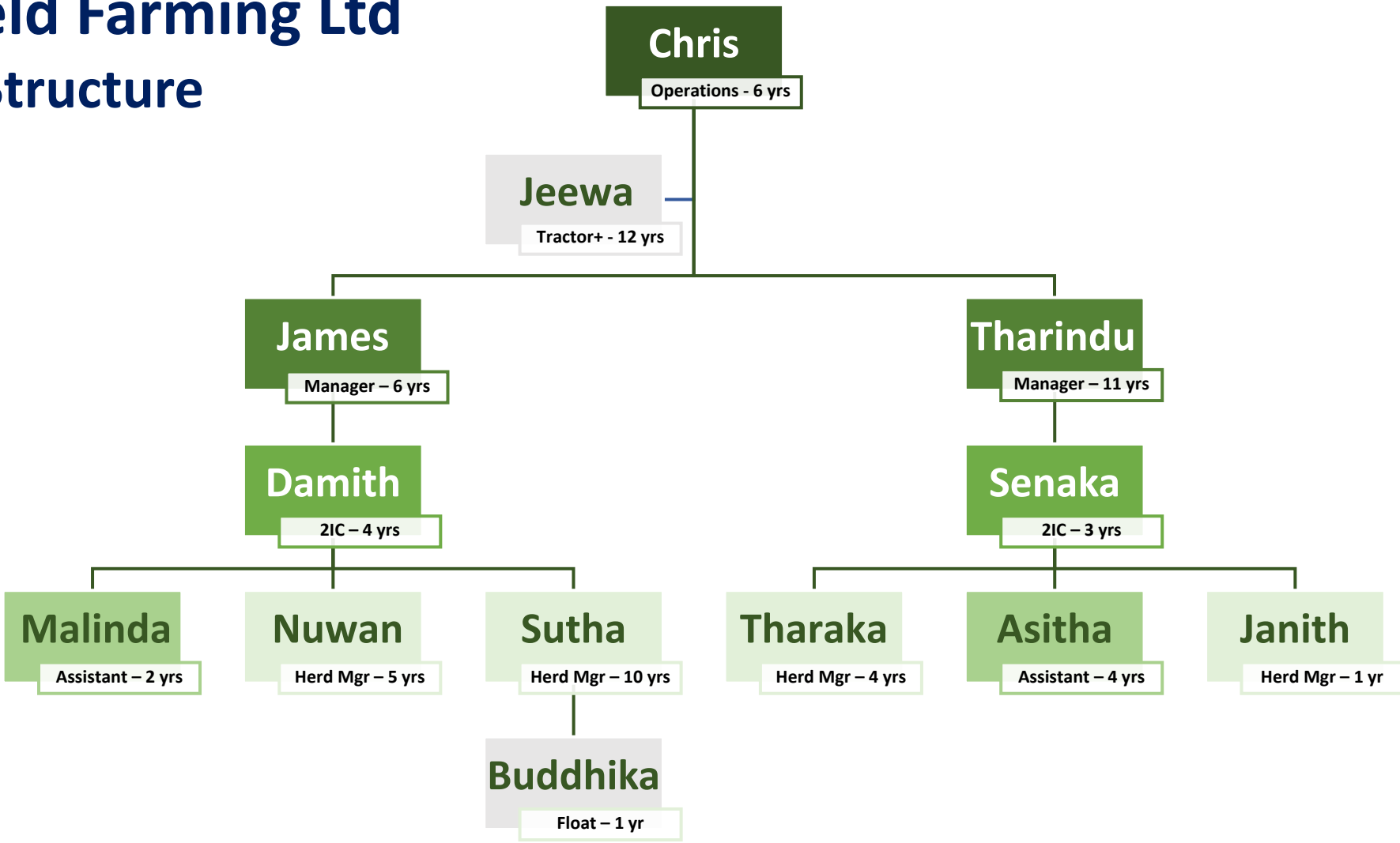


Driffield Support Land



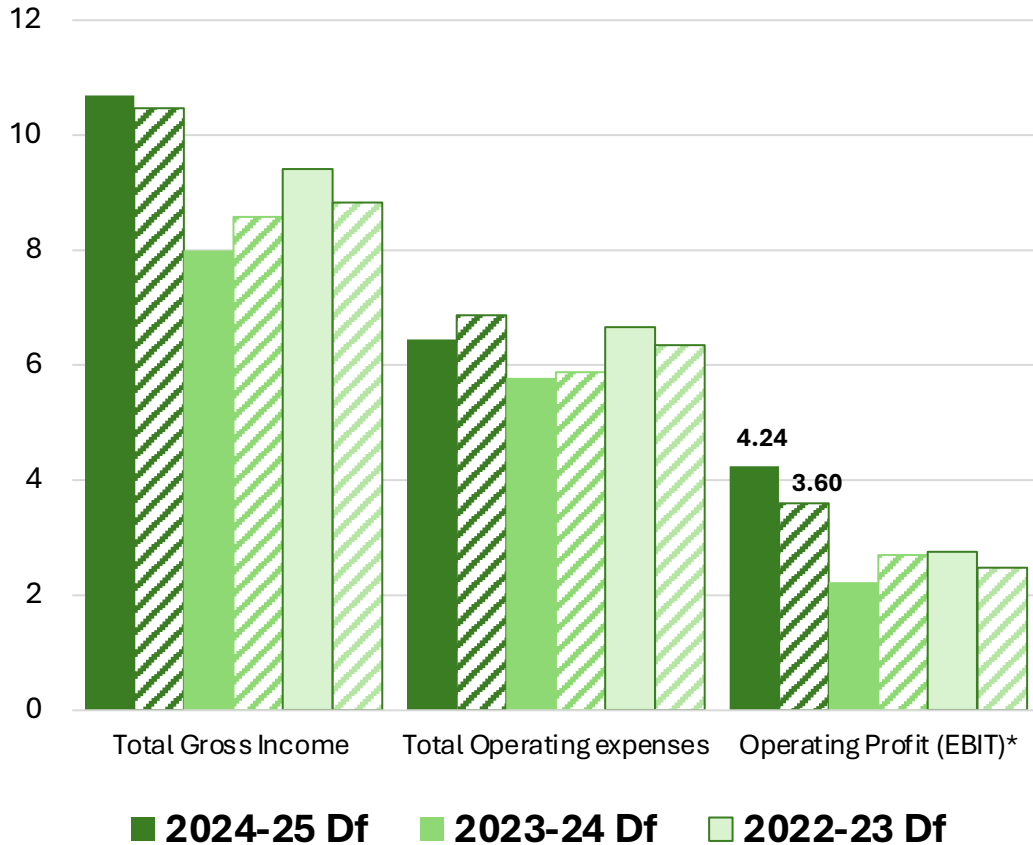
Driffield Farming Ltd

Team Structure



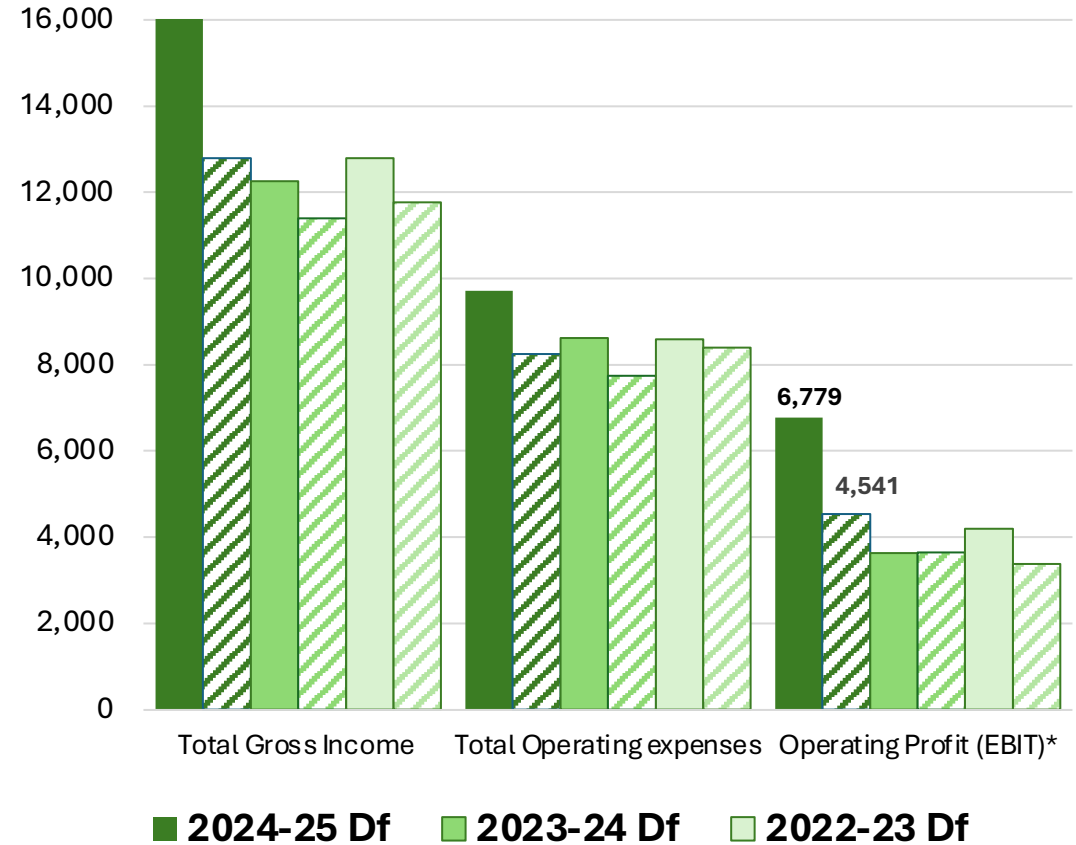
Income, Expenses & Profit (per kgMS)

Driffield (solid lines) vs
DairyBase average (hashed lines)

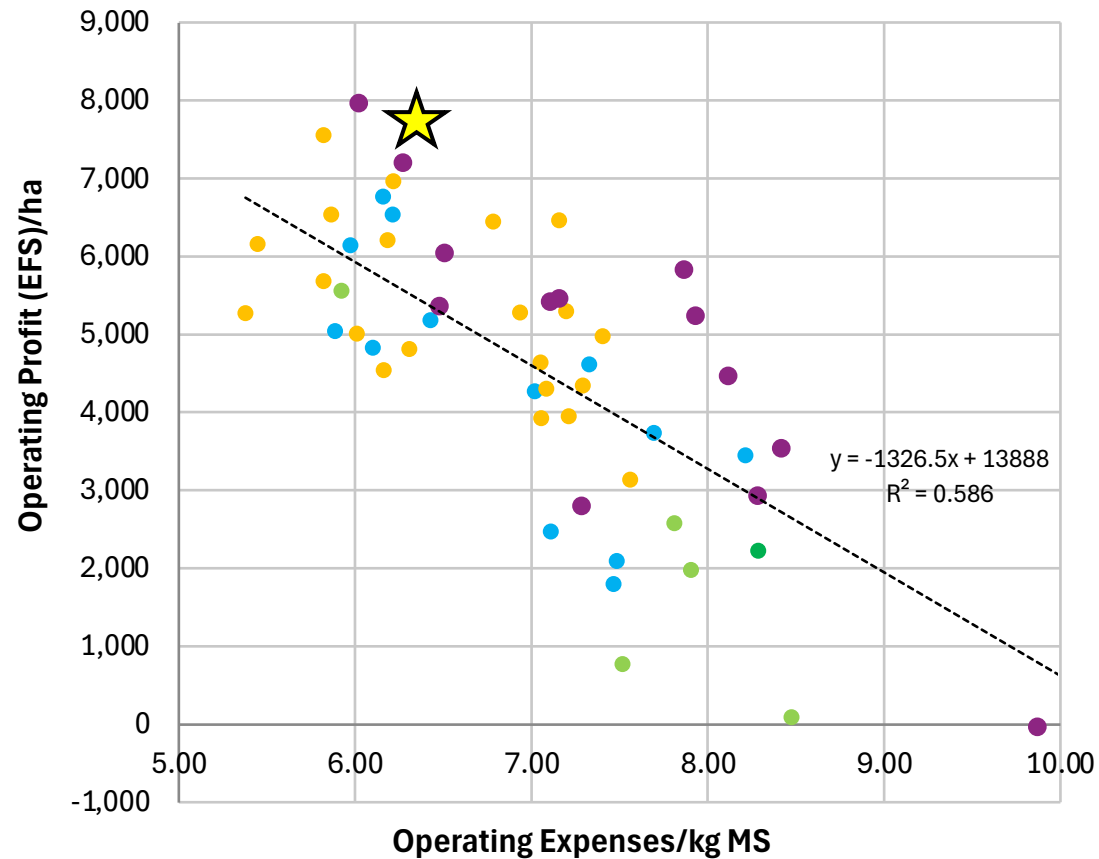


Income, Expenses & Profit (per ha)

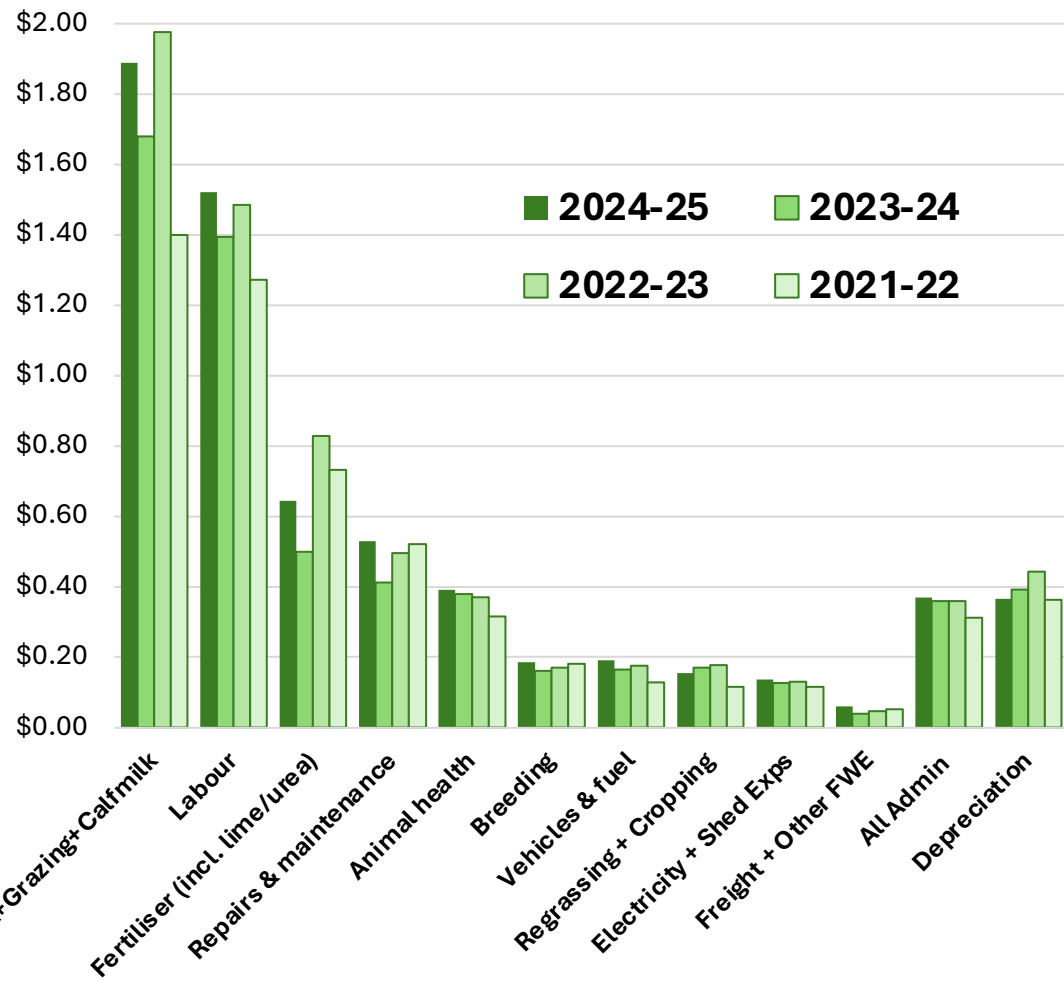
Driffield (solid lines) vs
DairyBase average (hashed lines)



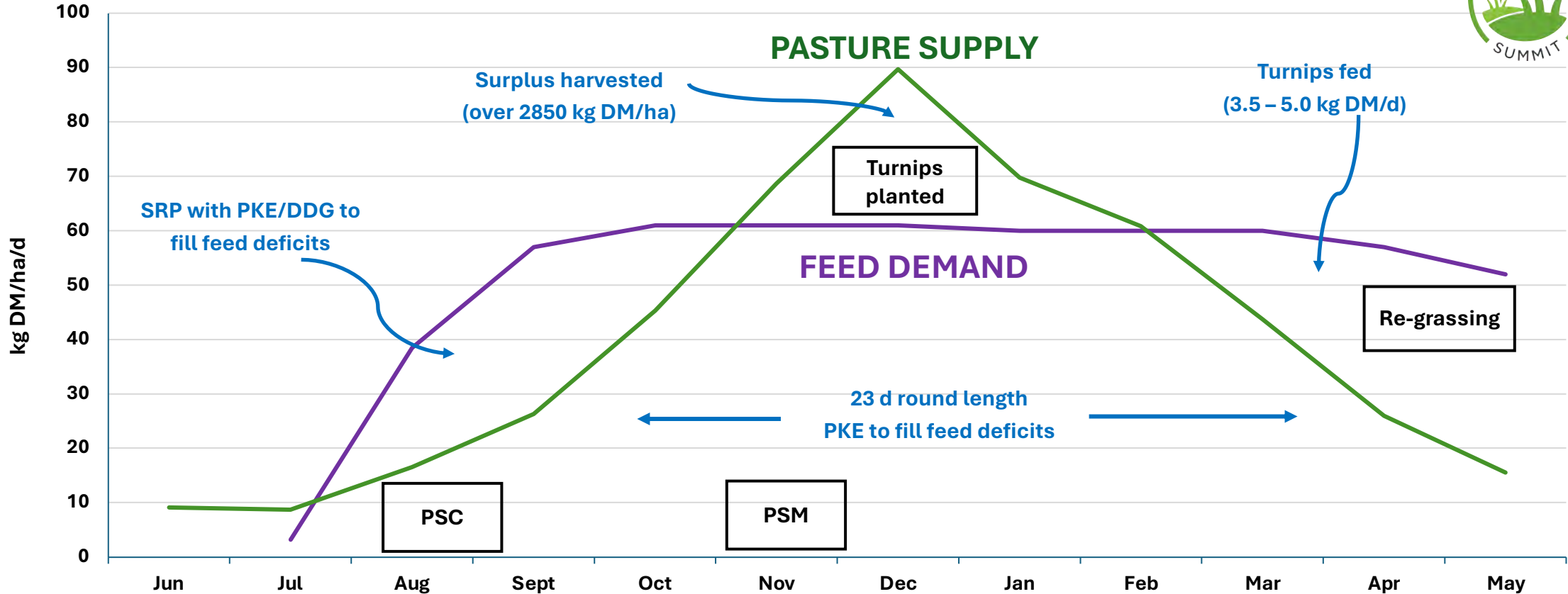
Otago - Southland - Owner operator - Operating Profit /ha vs Operating Expenses/kg MS (2024-25)



Operating Expenses over time (\$/kgMS)

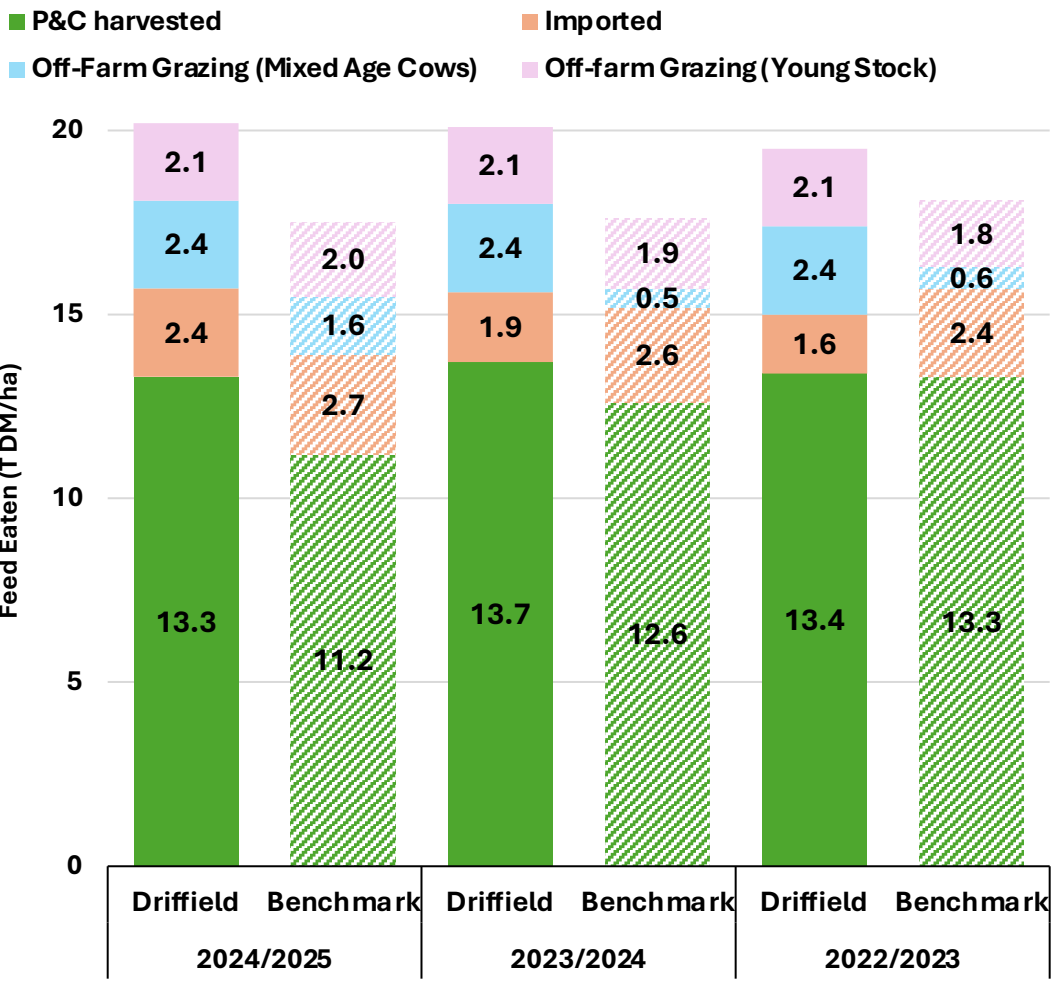


Seasonal Feed Management

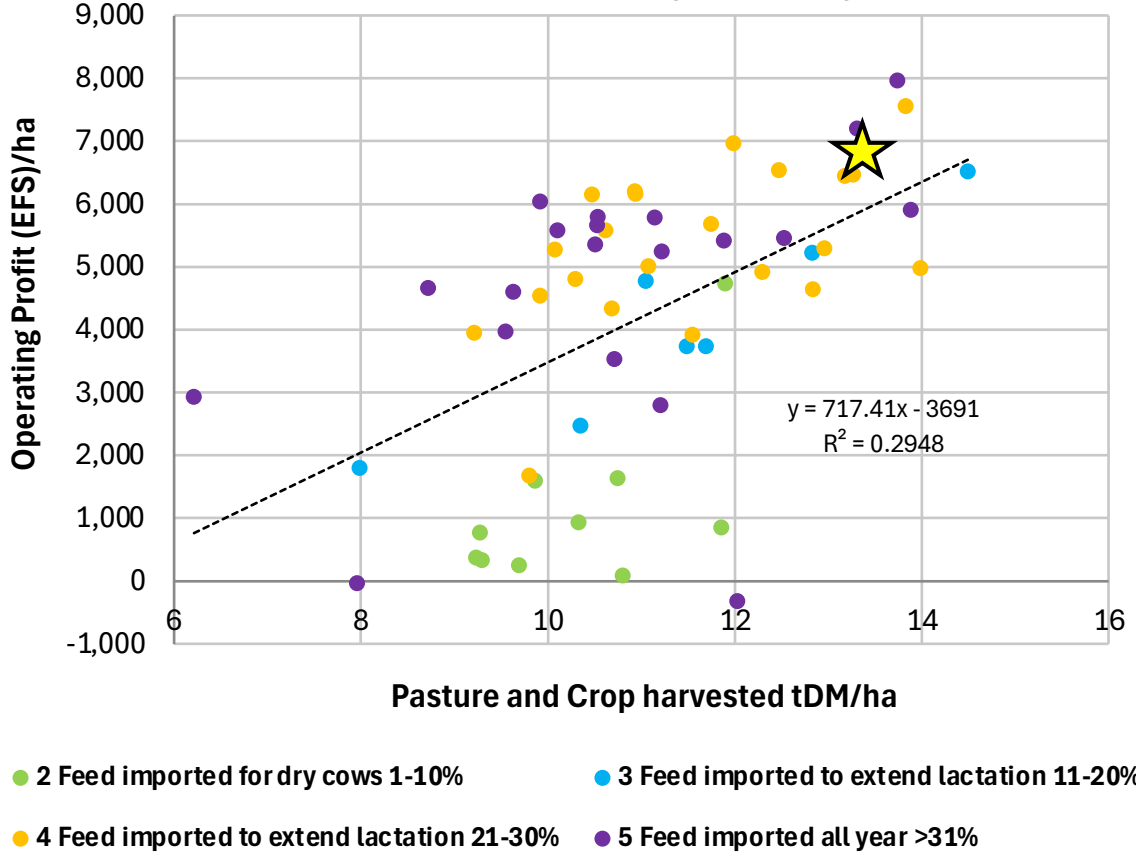


Supplements (kg DM)	1-6 PKE:DDG		0.5 PKE	3 PKE	4-5+ PKE
Pasture cover (kg DM/ha)	PSC 2150	1st round 2200 – end of season			

Feed Eaten

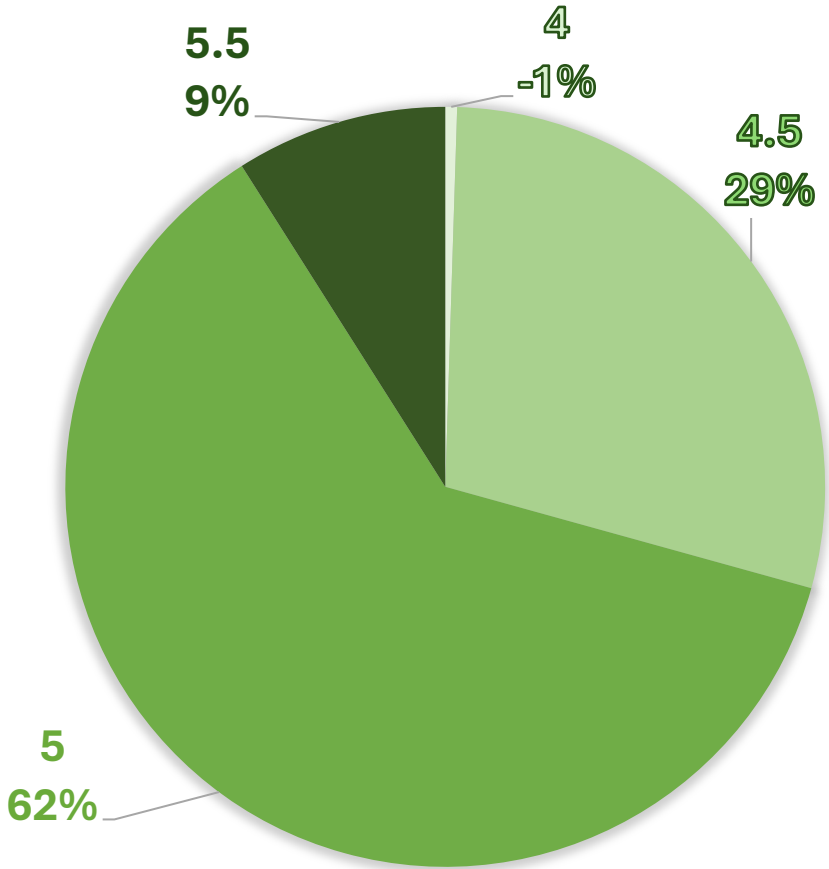


Otago - Southland - Owner operator + Owner with variable order/contract milker - Operating Profit/ha vs Pasture & Crop harvested tDM/ha (2024-25)



Cows & Winter Management

19-JUN-25 BCS BARN



Driffield Farming Winter Feed Management

